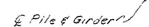


For widening of other side of
End Span See Dwg No 1003-B



Structural drawing of a beam-column joint showing reinforcement details. The drawing includes dimensions for beam width (26 inches), joint width (3 inches), and various reinforcement bar sizes and quantities (e.g., #4 Gs, #3, #2). It also shows a 30-degree angle for a diagonal reinforcement bar and a 1/8 inch gap at the joint interface.

SECTION F-F (see dwg. #9022)

Dimensions are C. to C. of bars

[illegible]

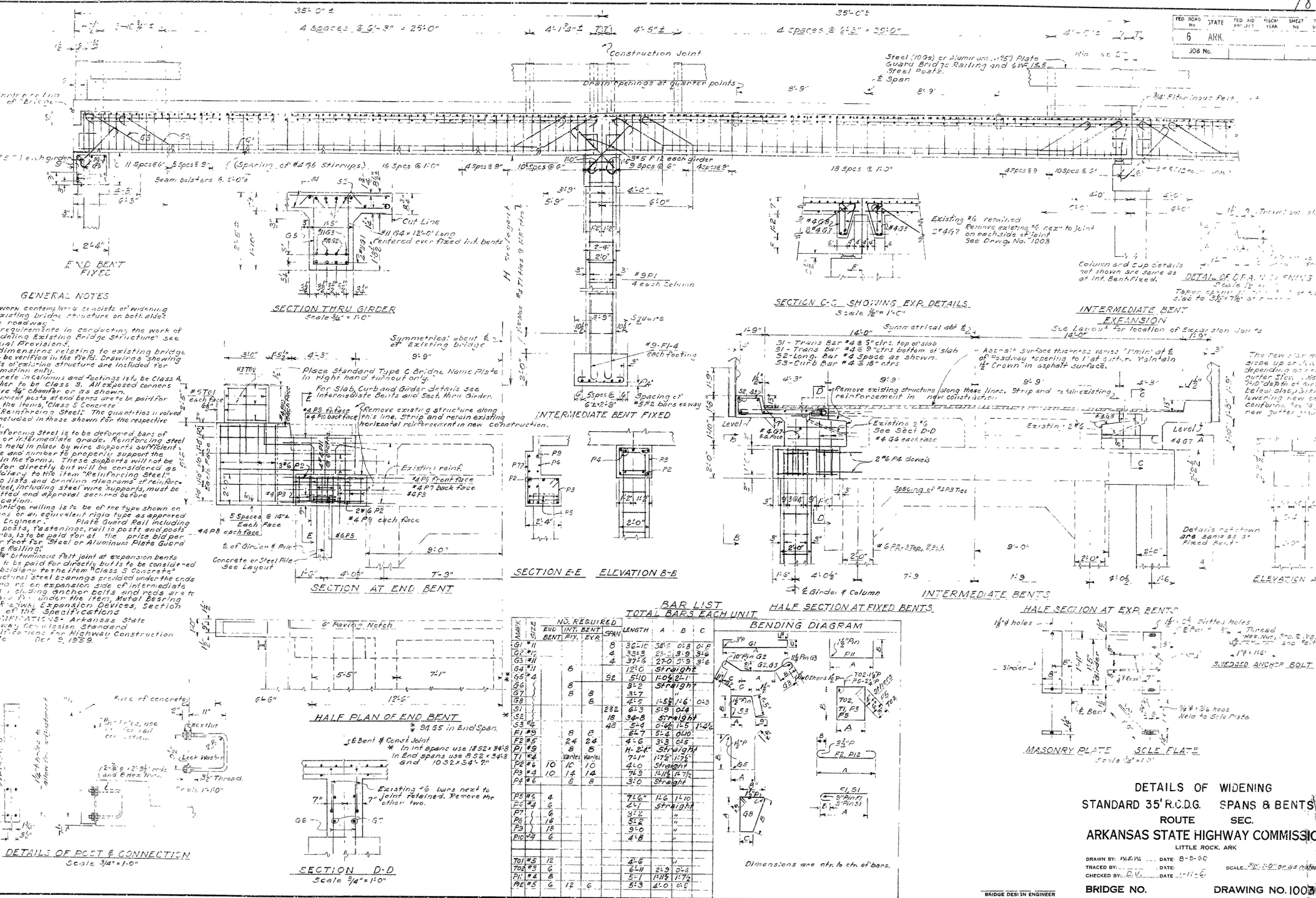
Note:
For General Notes see
Draw No. 332-B & 334

Note:
For General Notes see
Draw No. 332-B & 334

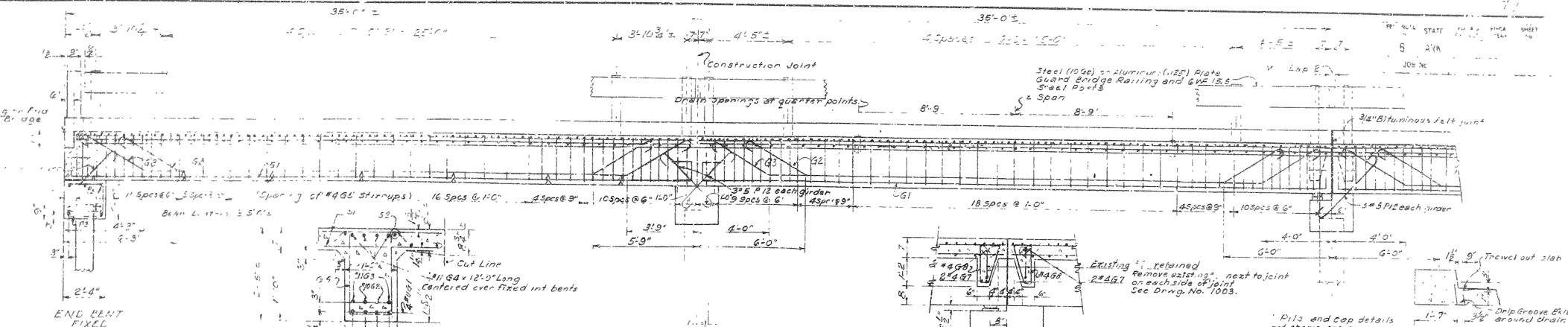
Dimensions are C to C of Bars.

DRAWN BY: E.R.B. DATE: 4-10-56
 TRACED BY: _____ DATE: _____ SCALE: AS SHOWN
 CHECKED BY: P.E.W. DATE: 3-9-56
 BRIDGE NO. 657 & 558 DRAWING NO. 1003-C

L. Carlson
BRIDGE DESIGN ENGINEER



Bridge Design Engineers



GENERAL NOTES

Contemplated consists of widening existing bridge structure on both sides of roadway.

Dimensions in conducting the work of existing bridge structure see drawings.

Dimensions relating to existing bridge structure in the field drawings showing existing structure are included for reference only.

All exposed corners of structure on all shown posts at end bents are to be paid for under "Class S Concrete".

Reinforcing steel quantities involved in those shown for the respective bents.

Reinforcing steel is to be deformed bars of intermediate grade. Reinforcing steel in place by wire supports sufficient number to properly support the concrete. These supports will not be directly but will be considered as "in the item" Reinforcing Steel.

Reinforcing steel wire supports must be used and approved secured before casting.

Reinforcing steel is to be of the type shown on an equivalent rigid type as approved by the State Highway Commission.

Reinforcing steel is to be of the type shown on an equivalent rigid type as approved by the State Highway Commission.

Reinforcing steel is to be of the type shown on an equivalent rigid type as approved by the State Highway Commission.

Reinforcing steel is to be of the type shown on an equivalent rigid type as approved by the State Highway Commission.

Reinforcing steel is to be of the type shown on an equivalent rigid type as approved by the State Highway Commission.

Reinforcing steel is to be of the type shown on an equivalent rigid type as approved by the State Highway Commission.

Reinforcing steel is to be of the type shown on an equivalent rigid type as approved by the State Highway Commission.

Reinforcing steel is to be of the type shown on an equivalent rigid type as approved by the State Highway Commission.

Reinforcing steel is to be of the type shown on an equivalent rigid type as approved by the State Highway Commission.

Reinforcing steel is to be of the type shown on an equivalent rigid type as approved by the State Highway Commission.

Reinforcing steel is to be of the type shown on an equivalent rigid type as approved by the State Highway Commission.

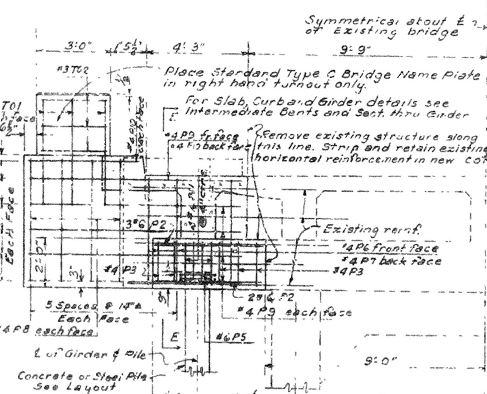
Reinforcing steel is to be of the type shown on an equivalent rigid type as approved by the State Highway Commission.

Reinforcing steel is to be of the type shown on an equivalent rigid type as approved by the State Highway Commission.

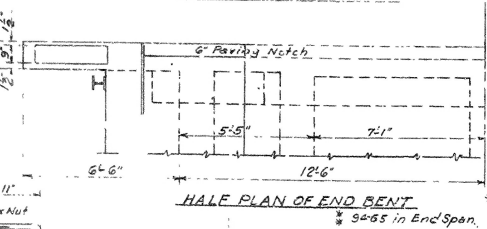
Reinforcing steel is to be of the type shown on an equivalent rigid type as approved by the State Highway Commission.

SECTION THRU GIRDER

Scale 3/4" = 1'-0"

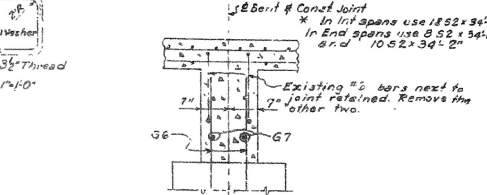


SECTION AT END BENT



HALF PLAN OF END BENT

Scale 3/4" = 1'-0"

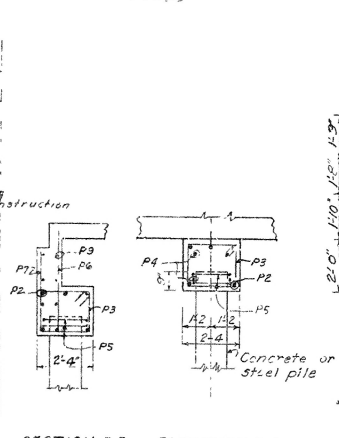


SECTION D-D

Scale 3/4" = 1'-0"

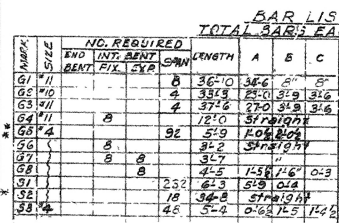


INTERMEDIATE BENT FIXED



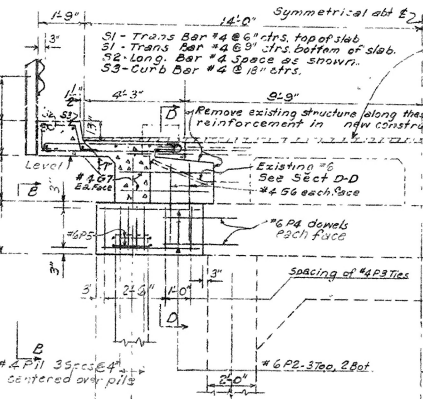
SECTION E-E ELEVATION B-B

Scale 3/4" = 1'-0"



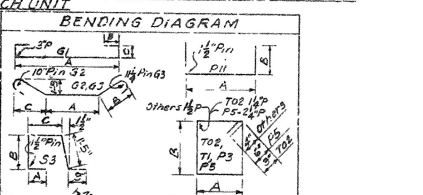
SECTION C-C SHOWING EXP. DETAILS

Scale 1/2" = 1'-0"



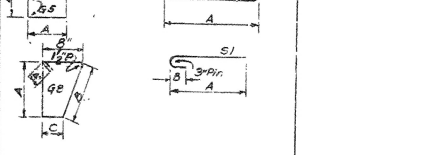
INTERMEDIATE BENTS

Scale 1/2" = 1'-0"



HALF SECTION AT FIXED BENTS

Scale 1/2" = 1'-0"



HALF SECTION AT EXP. BENTS

Scale 1/2" = 1'-0"



BAR LIST									
TOTAL BARS EACH UNIT									
MARK	SIZE	NO. REQUIRED	END BENT	INT. BENT	EXP. BENT	LENGTH	A	B	C
G1	#11	8	36'-0"	34'-6"	2'-0"	8'			
G2	#10	4	33'-0"	34'-0"	3'-0"	3'-6"			
G3	#11	4	37'-6"	37'-0"	3'-0"	3'-6"			
G4	#11	4	12'-0"	37'-0"	3'-0"	3'-6"			
G5	#4	92	5'-0"	10'-0"	10'-0"	10'-0"			
G6	#4	8	3'-2"	3'-2"	3'-2"	3'-2"			
G7	#4	8	3'-7"	3'-7"	3'-7"	3'-7"			
G8	#4	8	4'-5"	1'-58"	7'-6"	0'-3"			
G9	#4	232	6'-3"	5'-9"	6'-6"	6'-6"			
G10	#4	48	3'-6"	3'-6"	3'-6"	3'-6"			
G11	#4	48	5'-2"	0'-6"	7'-5"	1'-6"			
P1	#6	10	10	10	10	4'-0"	Straight		
P2	#6	10	10	10	10	7'-6"	1/4" B7		
P3	#6	10	10	10	10	3'-0"	Straight		
P4	#6	4	4	4	4	7'-6"	1/4" B7		
P5	#6	4	4	4	4	3'-2"	1/4" B7		
P6	#6	4	4	4	4	3'-2"	1/4" B7		
P7	#6	4	4	4	4	3'-2"	1/4" B7		
P8	#6	4	4	4	4	3'-2"	1/4" B7		
P9	#6	4	4	4	4	3'-2"	1/4" B7		
P10	#6	4	4	4	4	3'-2"	1/4" B7		
T1	#5	12				4'-8"			
T2	#5	12				4'-8"			
T3	#5	12				4'-8"			
T4	#5	12				4'-8"			
T5	#5	12				4'-8"			
T6	#5	12				4'-8"			
T7	#5	12				4'-8"			
T8	#5	12				4'-8"			
T9	#5	12				4'-8"			
T10	#5	12				4'-8"			

Dimensions are c/n c/n of bars.

DETAILS OF WIDENING
STANDARD 35'R.C.D.G. SPANS & BENTS
ROUTE SEC.
ARKANSAS STATE HIGHWAY COMMISSION
LITTLE ROCK, ARK.

DRAWN BY M.E.M. DATE 8-5-50
CHECKED BY C.W. DATE 1-1-51
BRIDGE NO. DRAWING NO 1003D